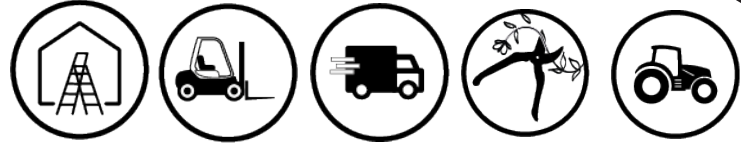




>> Type of use (*)



>> Technical features

- ✓ Soft outdoor 2 x 1 vest in Softshell fabric with breathable membrane and bonded micro fleece lining.
- ✓ 94% polyester, 6% elastane.
- ✓ Front waterproof zip closing. Straight collar.
- ✓ 4 outer pockets with waterproof zip. 3 inner pockets. Reflective piping. Adjustable wrists. Removable sleeves.
- ✓ Inside tightening waist with elastic drawstring and stoppers.
- ✓ **Waterproof 8000 mm. Breathable 800 mvp.**
- ✓ **Colour:** black / grey. Red contrasts.
- ✓ **Sizes and packings:**

| | | |
|--------|-----------------|--|
| | S to 4XL | |
| Carton | 10 units | |
| Bundle | 1 unit | |

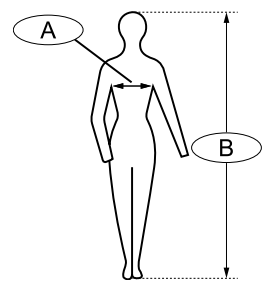
Learn more: www.singer.fr

>> Advantages

- ✓ Very light wear. Outdoor profile.
- ✓ Convenient: the sleeves zip off to convert to a waitcoat.
- ✓ The innovative material of this garment provides a very good elasticity and a high sensation of comfort.
- ✓ Comfortable micro Polar fleece finish inside.
- ✓ Water-repellent and breathable soft fabric. Waterproof zippers.



| size | Chest (cm) (A) | Height (cm) (B) |
|------|----------------|-----------------|
| S | 84-96 | 160-172 |
| M | 92-104 | 166-178 |
| L | 100-112 | 172-184 |
| XL | 108-120 | 180-192 |
| 2XL | 116-128 | 188-198 |
| 3XL | 126-138 | 192-202 |



>> Compliance

This garment has been tested according to the following European Standards (**Category I**).

- **EN ISO 13688: 2013.** Protective garment. General requirements.
- **EN 14058: 2004.** Garments for protection against cool environments.

It complies with the European Regulation (**EU**) **2016/425** on Personal Protective Equipment (**PPE**). The PPE is subject to the conformity assessment procedure based on internal production control (**module A**) set out in Annex IV (**Minor risks**).

Download the EU declaration of conformity on: <http://docs.singer.fr>

(*) ANNEX I, Category I, e) : Atmospheric conditions that are not of an extreme nature.



Your distributor **SINGER® SAFETY**

